

SANDERS & FINK

Founded in 2011, Sanders & Fink has become one of the leading suppliers of engineered wood flooring and luxury vinyl flooring in the UK. However, the history of this family-run company goes further back in time. With roots that date all the way to 1961, Sanders & Fink has a wealth of industry experience and the knowledge to make flooring to an exceptionally high standard.

Committed to premium quality, environmental awareness and innovation, Sanders & Fink products are revolutionising modern interiors by offering the perfect blend of style, durability, and environmental impact at affordable prices.

FITTING & CARE GUIDE

PRO LOC

RIGID CORE VINYL FLOORING

HERRINGBONE

PLEASE READ IN FULL BEFORE YOU START

Thank you for choosing Sanders & Fink. With years of experience in flooring, the very best in manufacturing procedures and quality raw materials you can be sure of a high quality product that will look and feel great for many years to come.

To make sure your Sanders & Fink floor looks and lasts as intended, we've created this guide to help ensure your floor is properly fitted and maintained over time so please read in full before you start.

RECOMMENDED USE

- Residential and light commercial applications
- Interior use only in climate-controlled environments
- Not for use on ramps
- Do not install planks over floors that are sloped for drainage.

GENERAL

Pro Loc Rigid Core Vinyl Flooring

- Should only be laid on sub-floors that are dry, structurally sound, level (flat to 4.7mm in 4m) and clean (thoroughly swept and free of all debris).
- Has a 2G locking system and is normally loose laid without adhesive.
- Installation in certain types of facilities may involve extreme stress and compromise the locking system (e.g facilities where walkers/wheelchairs are in frequent use (i.e. residential and or extended care use), or facilities with heavy displays, racks, dentist chairs etc).

Check your order

When you receive your Sanders & Fink product, immediately check it for product type, quantity and individual defects before attempting installation and report any problems to your retailer right away. Mistakes can be rectified and replacement materials provided at no extra charge, but only if defects are reported before installation.

- Variations in colour and structure are designed to enhance natural appearance and mixing the planks creates a random and natural appearance.

- A cutting allowance must be added to your floor m² order at the time of purchase. Allow a minimum of 5-10% for cuts, waste and defects.

Transport and storage

During transport and storage your Sanders & Fink flooring should be kept flat, fully supported and protected from excessive heat and cold.

PRIOR TO INSTALLATION

It is essential that the installation site and sub-floor are checked to ensure they are environmentally and structurally acceptable. Additionally, acclimating your flooring prior to installation reduces the risk of damage and is highly recommended. If your planks are damaged by installation no warranty can be provided so the following must be undertaken before installation.

Installation site

Sanders & Fink Rigid Core Vinyl Flooring can be installed directly over most existing floor coverings providing the existing surface is clean, flat, dry and structurally sound (no loose grout, tile, or planks). Wood flooring glued to concrete must be removed before installation and concrete must be smooth and permanently dry.

Sub-floor preparation

- Although Pro Loc Rigid Core Vinyl Flooring planks are water-resistant, they are not to be used as a moisture barrier and your sub-floor should be completely dry prior to installation.
- Sub-floors must be structurally sound, solid, stable, level, plumb, and true to a tolerance in plane of 4.7 in 4m. Voids or humps in the sub-floor will prevent the plans from locking properly:
 - Cracks and holes must be filled with a fast-setting cement-based polymer, modified patching compound or equivalent.
 - Any unevenness over 4.7mm must be sanded down or levelled.
 - The surface must be clean of dirt, oil, adhesive residue etc. and carpet staples should be removed.

Acclimatisation

It is recommended that Sanders & Fink Rigid Core Vinyl Flooring is acclimated prior to installation. Store the boxes flat in the area where they will be installed for a minimum of 48 hours at a room temperature of 18-26°C.

CARE INSTRUCTIONS

- A natural or colourfast mat should be placed at every external doorway to protect the flooring from water and dirt.
- Felt pads, soft castors or non-staining large surface floor protectors should be attached to all heavy objects, appliances and furniture legs to protect the floor from damage. The heavier the item, the wider the floor protector should be.
- Furniture with castors or wheels must be easy swivelling, large surface non-staining and suitable for resilient floors.
- Make sure pets have nails clipped regularly to avoid scratching.
- Wipe up spills, spots and excessive liquids immediately.
- Clean your floor regularly using the wand attachment of a vacuum cleaner or a soft bristle broom to remove loose dirt and grit. Please note: If vacuum cleaners with rolling castors are used, we recommend only soft wheels that are wide enough to support the load.
- Damp mop as needed using clean water and a diluted non-abrasive vinyl floor cleaner recommended for no wax vinyl floors.
- DO NOT:
 - Do not use harsh cleaning chemicals, bleach or wax on your Sanders & Fink Pro Loc floor.
 - Do not use ball type castors as they can damage the floor.
- Avoid exposure to long periods of direct sunlight. Close blinds or curtains during peak sunlight hours.

WARRANTY INFORMATION

We guarantee that to the original purchaser, for 15 years from the date of the original purchase and in a dry residential indoor setting, your floor will be free from manufacturing defects. If you make a claim within the warranty period and follow our servicing procedures, we will provide materials either to repair the defective area or replace the floor, at our discretion.

This warranty does not cover damage caused by:

- Improper care and maintenance
- Accidents, abuse or misuse
- Abnormal wear and tear such as damage caused from 'untipped' spike heel shoes, insufficient protection from furniture, pebbles, sand, and other abrasives
- Improper workmanship, or installation not in accordance with our installation instructions
- Water damage from moisture in a concrete slab, hydrostatic pressure, flooding caused by ice makers, refrigerators, sinks, dishwashers, pipes or natural disasters
- Planks coming apart at the seams because they have been engaged/disengaged more than three times
- Damage caused by vacuum cleaner beater bars and hard or metal castor wheels
- Damage caused by pet urine which has not been promptly wiped up and removed
- Painted bevelled edges

We exclude and will not pay for incidental or consequential damages under this warranty. By this we mean any loss, expense or damage other than to the flooring itself that may result from a defect in the flooring. No implied warranties extend beyond the terms of this written warranty.

QUERIES AND SERVICE

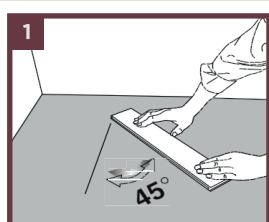
If you have any questions, contact your retail store who should be happy to help. Please keep your receipt as it will be needed to provide proof and date of purchase when resolving any problems that may occur.



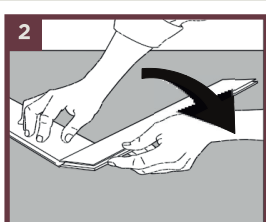
INSTALLATION

Installation of your flooring should be the last step of any construction project. The installation site must be closed with doors and windows properly secured ensuring a stable environment for the installation. Before beginning, **please ensure you have read this document in full and carried out all pre-installation checks and actions.**

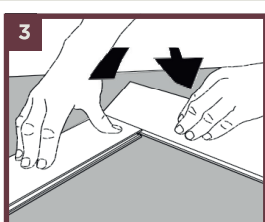
NOTE: The 2G click lock joints cannot be 'lifted' or angled apart when removing or repositioning a plank. To remove a plank, first disengage the top/long angle joint by lifting at a slight angle while pulling the complete rows away from each other. Then simply 'slide' the drop joint apart along the floor. Failure to slide this joint apart will damage the drop lock mechanism and prevent proper re-installation of the affected plank.



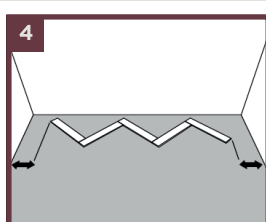
1. Getting started
Choose a wall to start at and begin installing at the left corner. Start with an R-panel and place it with its long side marking facing the left wall at an angle of 45°. Make sure that the distance between the left wall and the panel is less than the length of one panel.



2. Connect next panel
Continue with an L-panel. Press the long side of the L-Panel at an angle against the short side of the previously installed R-panel. Fold down the L-panel flat to the floor to lock the panels tightly together. Check that the grooves on the two panels form a continuous line.

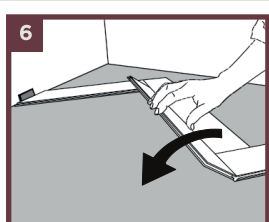
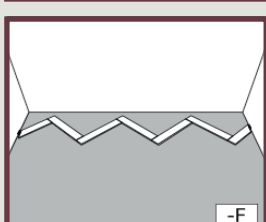
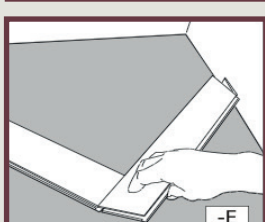
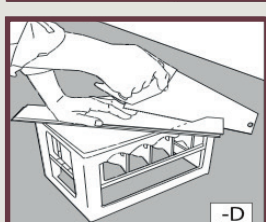
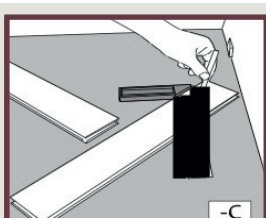
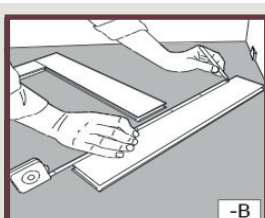
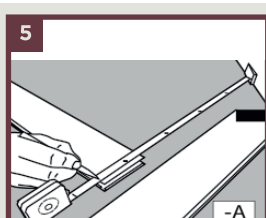


3. Connect additional panels
Next panel is an R-panel. Again, press the long side of the new R-panel at an angle against the short side of the previous L-panel and fold down. Continue like this with as many panels as may fit along the starting wall.

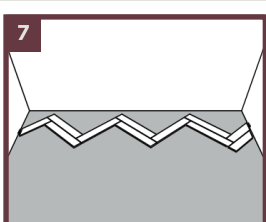


4. Centre the first row
Check that the first row of panels is centred along the starting wall. Make sure that the distance to the walls on both sides are less than the length of one panel. If not, add a panel at the right side.

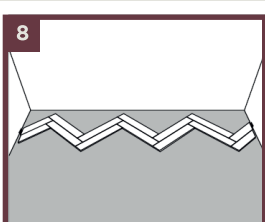
5. Cut the end panels to size
Measure and cut the end panels to size using a fine-toothed saw. Finish the first row with the cut end panels. Make sure that you leave a gap of 10mm to each wall.



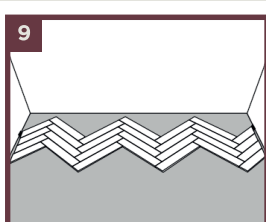
6. Start the second row
Start the next row with an R-panel. Place the new panel against the previous row and fold down.



7. Install the R-panels
Continue from the left to the right and install all the R-panels in the second row. Finish with a piece of panel cut to size (step 5).

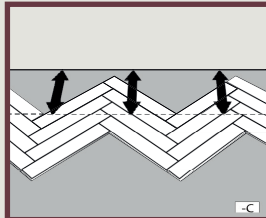
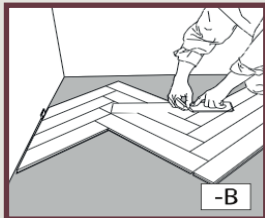
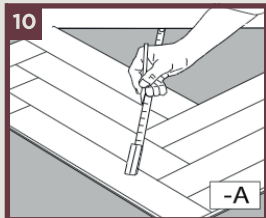


8. Continue with the L-panels
Now work in the opposite direction, from the right to the left and install all the L-panels in the second row. Finish with a piece of panel cut to size (step 5).

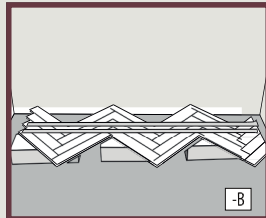
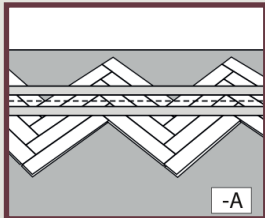


9. Complete four rows
Install additional rows to complete four full rows.

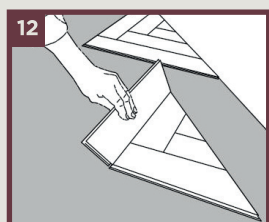
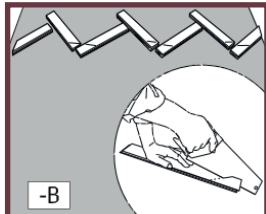
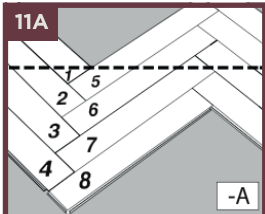
10. Adjust the starting rows
The first four rows have to be cut parallel to the wall. Measure and mark where to cut the floor panels at a fixed f parallel distance to the wall.



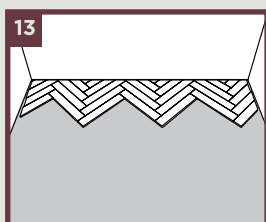
Alternative way to cut the first rows
Leave the left end-panels uninstalled. Tape along the marked line and place the flooring on top of a few flooring packages. Cut along the marked line. Then put the adjusted rows into place. Complete the first rows by installing the remaining end-panels. Start with the end-panel in the last row and finish at the first row.



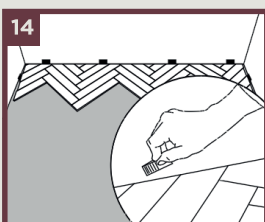
11. Dismantle and cut
Number the panels from 1 to X. This will allow you to keep the panels in order. Dismantle the panels and cut them to size along the previous marked line.



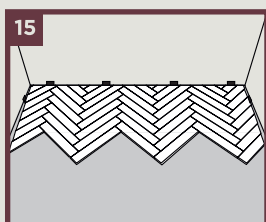
12. Install the starting triangles
Connect the cut starting panels to form triangular shapes, one by one. Start installing the triangles from the left corner. It is recommended to use glue to fix the smallest parts of the triangles into place by applying a small quantity of glue inside the groove.



13. Install a few more rows
Connect the triangles by installing a few additional rows of panels. Start each row from the left to the right with the R-panels, finish with the cut piece of panel (step 5) and then install all the L-panels in the row. Finish with the left end panel, cut to size.

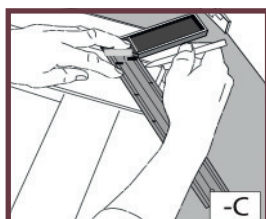
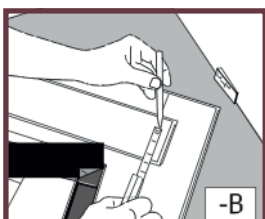
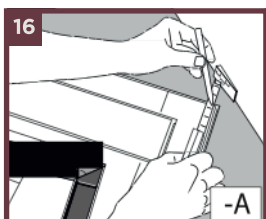


14. Put in spacers
Put in spacers between the flooring and the wall to ensure an expansion gap of 10mm.



15. Subsequent rows
Start each subsequent row by installing the R-panels from the left to the right and complete the row by laying the L-panels from the right to the left.

16. Last row
Measure and cut the panels in the last row to size. It is recommended to use glue to install the smallest pieces of panels. Apply a small quantity of glue inside the groove.



17. Spacers and skirting
Remove the spacers and cover the expansion gap with skirting boards or beadings.

