



ENGINEERED WITH LIFE IN MIND

Beautifully designed to offer high-quality flooring solutions for every style and budget, Life Flooring Laminate Flooring products have been created to deliver exceptional results and value for money.

With real-life in mind our laminate flooring is simple to install, suitable for use with underfloor heating, and comes with a 15 year guarantee that means fantastic results that you will enjoy for years to come.

FITTING & CARE INSTRUCTIONS

LAMINATE HERRINGBONE

PLEASE READ IN FULL BEFORE YOU START

RECOMMENDED USE

- Residential and light commercial applications
- Interior use only in climate-controlled environments
- Not for use on ramps
- Do not install panels over floors that are sloped for drainage

GENERAL

Where to install

All floor areas including basements, over clean, dry, solid and level floors of vinyl, concrete, ceramic tile, terrazzo, marble and board type underlayments. See 'preparation' section below to confirm detailed requirements.

Please note: installation should be avoided in certain facilities that involve extreme stress as the locking system may be compromised i.e. where walkers/wheelchairs are in frequent use (e.g. residential and extended care), or in facilities with heavy displays or equipment (e.g. racking, dentist chairs etc.)

Underlay

Because laminate flooring is generally fitted as a floating floor with panels being clicked into place instead of using glue, most underlay products will be suitable so the type of underlay should be determined by the sub-floor that is being fitted over and any specialist qualities your project requires (underfloor heating, sound-proofing etc.).

- **Concrete sub-floor:** To protect your floor from damp a separate moisture barrier or underlay with a built-in Damp Proof Membrane is required.
- **Wooden sub-floor:** Most underlays are suitable for use with wooden sub-floors.
- **Underfloor heating or sound-proofing:** If your flooring will be laid over underfloor heating, or improved sound-proofing is required, specialist underlay products should be considered.

Check your order

When you receive your Life Flooring product, immediately check it for product type, quantity and individual defects before attempting installation and report any problems to your retailer right away. Mistakes can be rectified and replacement materials provided at no extra charge, but only if defects are reported before installation.

- Variations in colour are designed to enhance natural appearance and mixing the panels creates a random and natural effect.
- A cutting allowance must be added to your floor m² order at the time of purchase. Allow a minimum of 5-10% for cuts, waste and defects.

Transport and storage

During transport and storage your Life Flooring should be kept flat, fully supported and protected from excessive heat and cold.

PREPARATION

The sub-floor must be checked to ensure it is acceptable and it is strongly recommended that your Life Flooring is acclimated (see below) prior to being installed. If your panels are damaged by installation no warranty can be provided so the following must be undertaken before installation.

Sub-floor preparation

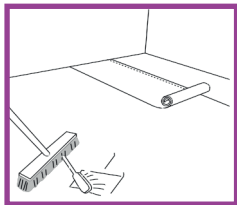
- Although your Life Flooring laminate panels are water-resistant, they are not to be used as a moisture barrier and your sub-floor should be completely dry prior to installation.
- Sub-floors must be structurally sound, solid, stable, level, plumb, and true to a tolerance in plane of 4.7mm in 4m. Voids or humps in the sub-floor will prevent the plans from locking properly:
 - Cracks and holes must be filled with a fast-setting cement-based polymer, modified patching compound or equivalent.
 - Any unevenness over 4.7mm must be sanded down or levelled.
 - The surface must be clean of dirt, oil, adhesive residue etc. and carpet staples should be removed.

Acclimatisation

It is recommended that your flooring is acclimated prior to installation. Store the boxes flat in the area where they will be installed for a minimum of 48 hours at a room temperature of 18-26°C.

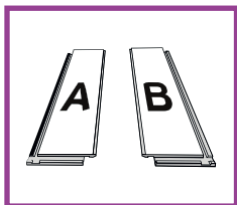
Vapour barrier/underlay

After cleaning and preparing the sub-floor roll out the vapour barrier (with a minimum overlap of 20cm) and underlay.



Flooring panels

Two different types of boards are used to install the herringbone pattern. These are referred to as A and B panels and should be divided into a separate stack of A-panels and B-panels prior to beginning installation.



Door trims and skirtings

All existing skirtings and trims should be removed prior to installation. If this is not possible door trims and skirtings must be undercut to allow the floor to move freely. If undercutting is required a panel should be placed (decorative side down) next to the trim/door moulding/skirting and sawn as shown to allow the panel to slide underneath.



INSTALLATION

Installation of your Life Flooring should be the last step of any construction project. The installation site must be closed with doors and windows properly secured ensuring a stable environment for the installation. **Before beginning installation, please ensure you have read this document in full and carried out all pre-installation checks and actions.** See over for step by step guidance.

CARE INSTRUCTIONS

Cleaning

- Clean your floor regularly using the wand attachment of a vacuum cleaner or a soft bristle broom to remove loose dirt and grit. If vacuum cleaners with rolling castors are used, we recommend only soft wheels that are wide enough to support the load.
- Lightly damp mop as needed using clean water and a diluted non-abrasive floor cleaner. Remember that laminate flooring can become slippery when wet so allow your floor to completely dry before use.
- Wipe up spills, spots and excessive liquids immediately.
- Remove tough spots with neat acetone, then wipe with a damp cloth immediately. Please note that acetone may be combustible/flammable so please follow instructions on the label carefully.

Protection

- A natural or colourfast mat should be placed at external doorways to collect tracked-in dirt and absorb excess moisture.
- Felt pads, soft castors or non-staining large surface floor protectors should be attached to all heavy objects, appliances and furniture legs to protect the floor from damage. The heavier the item, the wider the floor protector should be.
- Pet's nails should be clipped regularly to avoid scratching.
- Avoid exposure to long periods of direct sunlight by closing blinds or curtains during peak sunlight hours.

Don'ts

- Don't use a wet-mop.
- Don't use soap-based detergents as these may leave a dull film on your floor.
- Don't use harsh cleaning chemicals, wax or polish.
- Don't use abrasive cleaners, steel wool, or scouring powder which can scratch your floor.
- Don't use ball type castors as they can damage the floor.

WARRANTY INFORMATION

We guarantee that to the original purchaser, for 15 years from the date of the original purchase and in a dry residential indoor setting, your floor will be free from manufacturing defects. If you make a claim within the warranty period and follow our servicing procedures, we will provide materials either to repair the defective area or replace the floor, at our discretion.

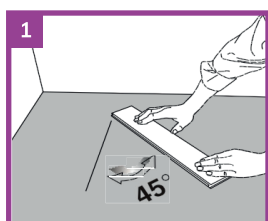
This warranty does not cover damage caused by:

- Improper care and maintenance
- Accidents, abuse or misuse
- Abnormal wear and tear such as damage caused from 'untipped' spike heel shoes, insufficient protection from furniture, pebbles, sand, and other abrasives
- Improper workmanship, or installation not in accordance with our installation instructions
- Water damage from moisture in a concrete slab, hydrostatic pressure, flooding caused by ice makers, refrigerators, sinks, dishwashers, pipes or natural disasters
- Panels coming apart at the seams because they have been engaged/disengaged more than three times
- Damage caused by vacuum cleaner beater bars and hard or metal caster wheels
- Damage caused by pet urine which has not been promptly wiped up and removed
- Painted bevelled edges

We exclude and will not pay for incidental or consequential damages under this warranty. By this we mean any loss, expense or damage other than to the flooring itself that may result from a defect in the flooring. No implied warranties extend beyond the terms of this written warranty.

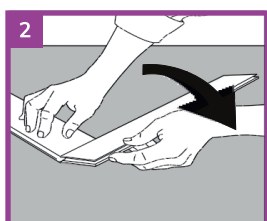
QUERIES AND SERVICE

If you have any questions, contact your retail store who should be happy to help. Please keep your receipt as it will be needed to provide proof and date of purchase when resolving any problems that may occur.



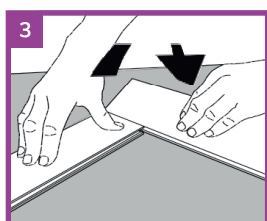
1. Getting started

Choose a wall to start at and begin installing at the left corner. Start with an A-panel and place it with its long side marking facing the left wall at an angle of 45°. Make sure that the distance between the left wall and the panel is less than the length of one panel.



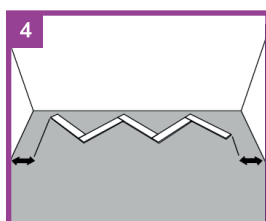
2. Connect next panel

Continue with a B-panel. Press the long side of the B-panel against the short side of the previously installed A-panel. Fold down the B-panel flat to the floor to lock the panels tightly together. Check that the grooves on the two panels form a continuous line.



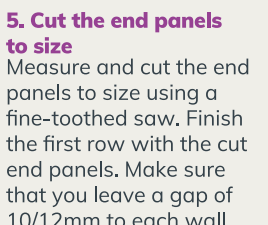
3. Connect additional panels

Next panel is an A-panel. Again, press the long side of the new A-panel at an angle against the short side of the previous B-panel and fold down. Continue like this with as many panels as may fit along the starting wall.



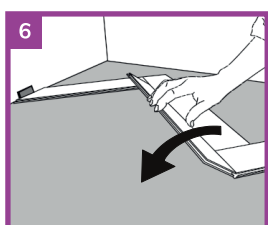
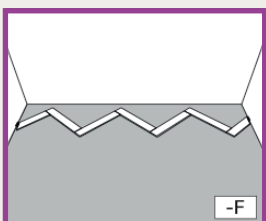
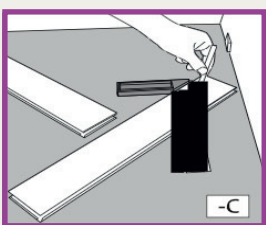
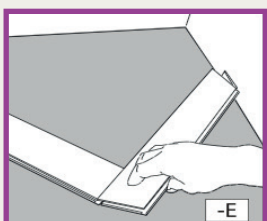
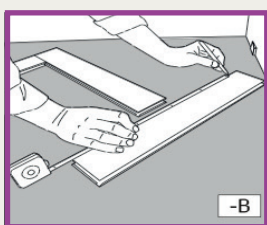
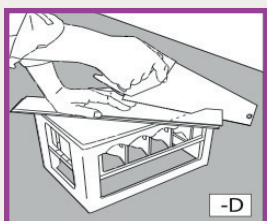
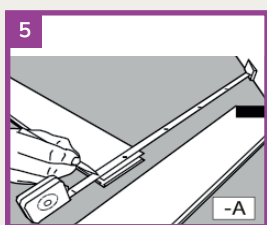
4. Centre the first row

Check that the first row of panels is centred along the starting wall. Make sure that the distance to the walls on both sides are less than the length of one panel. If not, add a panel at the right side.



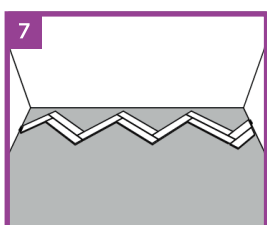
5. Cut the end panels to size

Measure and cut the end panels to size using a fine-toothed saw. Finish the first row with the cut end panels. Make sure that you leave a gap of 10/12mm to each wall.



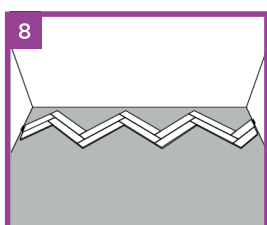
6. Start the second row

Start the next row with an A-panel. Place the new panel against the previous row and fold down.



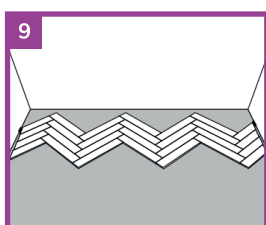
7. Install the A-panels

Continue from the left to the right and install all the A-panels in the second row. Finish with a piece of panel cut to size (step 5).



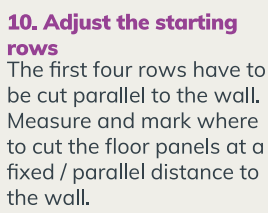
8. Continue with the B-panels

Now work in the opposite direction, from the right to the left and install all the B-panels in the second row. Finish with a piece of panel cut to size (step 5).



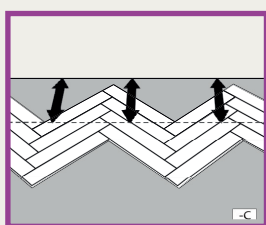
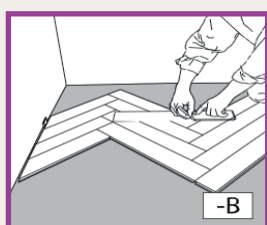
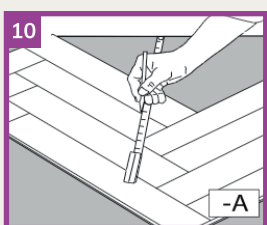
9. Complete four rows

Important Note: Install additional rows to complete four full rows.



10. Adjust the starting rows

The first four rows have to be cut parallel to the wall. Measure and mark where to cut the floor panels at a fixed / parallel distance to the wall.

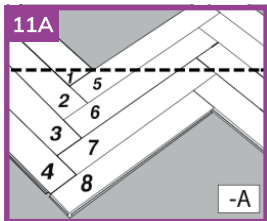


11. Either A: Dismantle and cut

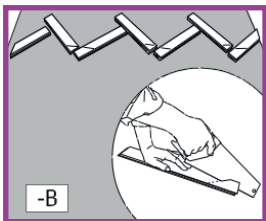
Number the panels in a sequence you will remember to make sure you keep them in the right order. Dismantle the panels and cut them to size along the previous marked line.

Or B: Cut the first rows without dismantling

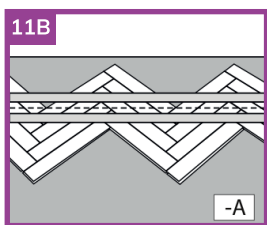
Leave the left end-panels uninstalled. Tape along the marked line and place the flooring on top of a few flooring packs. Cut along the marked line, then put the adjusted rows into place. Complete the first rows by installing the remaining end-panels. Start with the end-panel in the last row and finish at the first row.



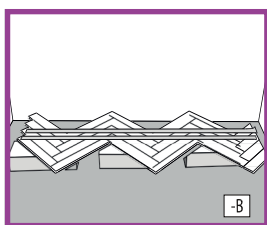
11A



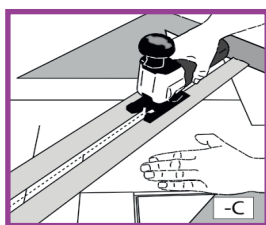
11B



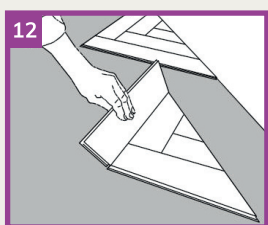
11C



11D

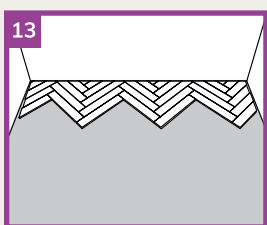


11E



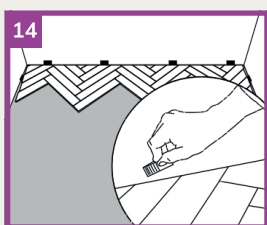
12. Install the starting triangles

Connect the cut starting panels to form triangular shapes, one by one. Start installing the triangles from the left corner. Fix the smallest parts of the triangles into place by applying a small quantity of glue inside the groove.



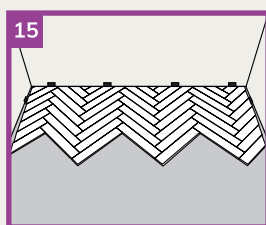
13. Install a few more rows

Connect the triangles by installing a few additional rows of panels. Start each row from the left to the right with the A-panels, finish with the cut piece of panel (step 5) and then install all the B-panels in the row. Finish with the left end panel, cut to size.



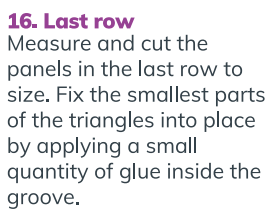
14. Put in spacers

Put spacers in between the flooring and the wall to ensure an expansion gap of 10/12mm.



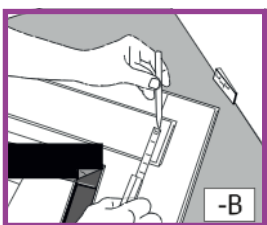
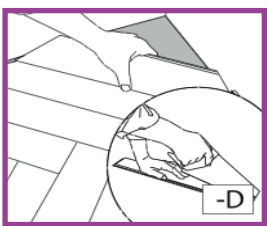
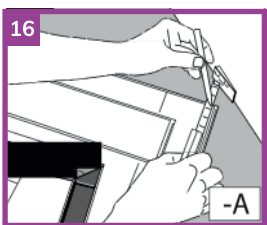
15. Subsequent rows

Start each subsequent row by installing the A-panels from the left to the right and complete the row by laying the B-panels from the right to the left.

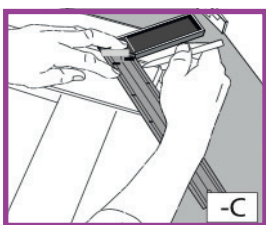


16. Last row

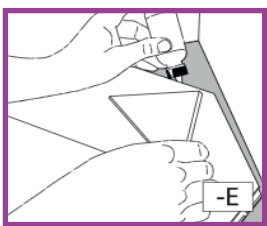
Measure and cut the panels in the last row to size. Fix the smallest parts of the triangles into place by applying a small quantity of glue inside the groove.



16C



16D



16E



16F

17. Spacers and skirting

Remove the spacers and cover the expansion gap with skirting boards or beadings.



17